

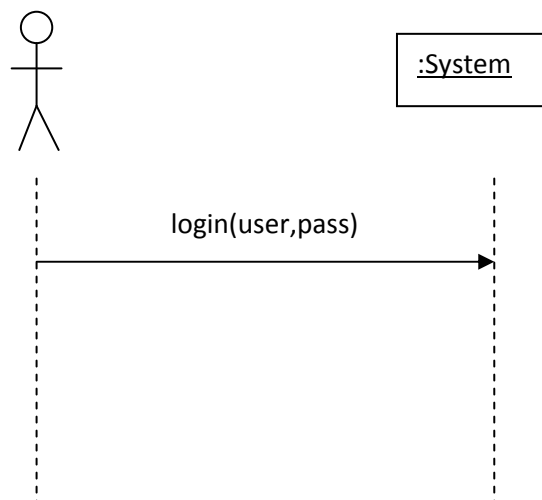
Example

Social Network

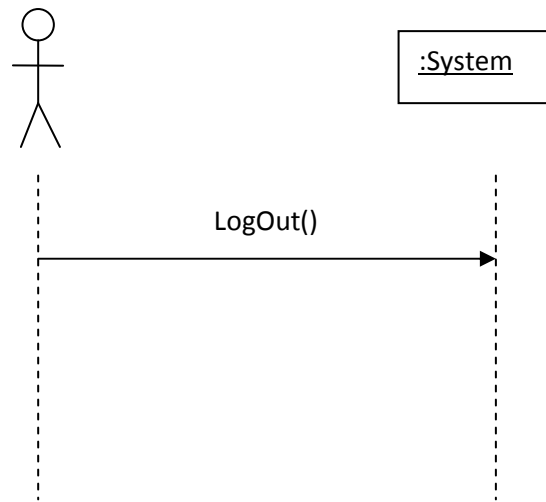
1. The access to the system will be made by a user; it will be a valid and operational email, and a password chosen by the user at the time of the membership.
[SPECIFICATION 1]
2. The user can edit at any time their personal data [SPECIFICATION 2]
3. The user can disable / remove friends, block a friend prevents them from seeing your data (comments, photos...), delete it makes them like a system user who has been removed from the list of friends of the user in question but you can request the friendship again. [SPECIFICATION 3]

System Sequence Diagram

1 Use Case Login



2 Use Case LogOut



3 Use Case Modify Data

